



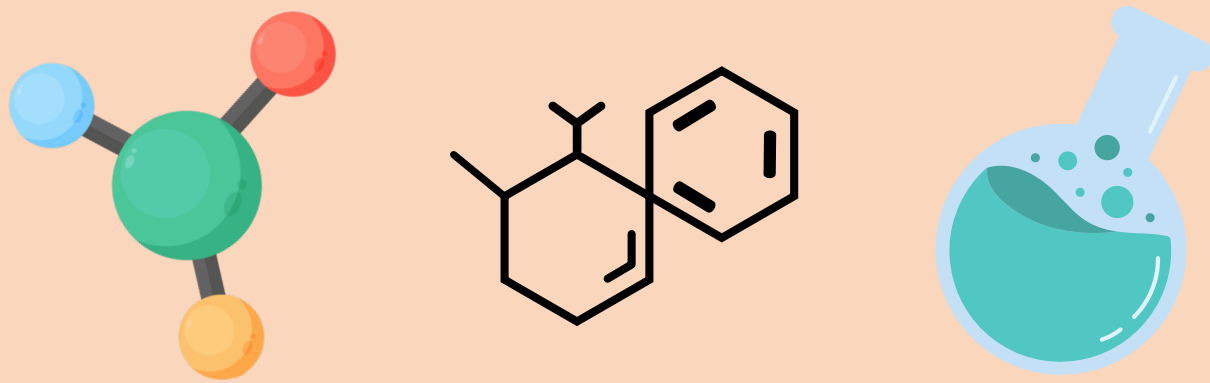
INTEGRATED WEED MANAGEMENT

WHAT IS IT?

Integrated weed management (IWM) is a comprehensive approach that combines various weed management strategies including cultural, biological, chemical and physical methods.

CHEMICAL

This involves the use of chemical substances, such as herbicides, that are designed to disrupt the growth and development of weeds.



BIOLOGICAL

This method involves the use of living organisms, most often insects or pathogens, to control or suppress weeds.



PHYSICAL

This involves mechanical methods that remove, damage or bury weeds and their seeds such as tillage, mowing, electricity and lasers.



CULTURAL

This involves manipulating the crop environment to make it less favorable for weed growth such as using diverse crop rotation, cover cropping and increased seeding rates.



Contact Breanne Tidemann
(breanne.tidemann@agr.gc.ca) for more information.



FUNDED BY:



Agriculture and
Agri-Food Canada

Agriculture et
Agroalimentaire Canada

Canada